

- **Bathless Technology**

Patented bathless technology eliminates the water bath, associated maintenance, and thermocirculator-related vibration and noise. High watt heaters raise media temperatures from ambient to 37°C in less than 15 minutes to increase throughput and promote a green laboratory by saving water and power.

- **Run Multiple Methods Simultaneously**

The symphony 7100 allows users to run up to three independent methods simultaneously minimizing method development time and increasing R&D productivity.

- **Independent and Configurable Modules**

Configurable from 1-8 positions, the symphony 7100's self-contained modules allow users to add and remove positions with unprecedented ease to offer scalability.

- **Intuitive Color Touch Screen Interface**

The brilliant color touch screen maximizes the dissolution chemist's productivity and command of the dissolution test with a vast array of features and functionality. The icon driven user interface lowers overall cost by reducing training time and user errors.

- **Independent RPMs with Continuous Monitoring**

Leveraging patent pending D-Drive technology, the symphony 7100 can raise and lower the shafts at three speeds as well as control and monitor the individual stirring speed in each vessel position.

- **In-shaft Temperature Monitoring**

The embedded temperature sensor ensures compliance by allowing users to continuously control, monitor, and record individual vessel temperatures throughout the dissolution test.

- **Semi-Circle Footprint**

The design of the symphony 7100 eliminates the obstructive drive head to improve sampling and vessel access.

- **Quick Change Height Adjustment**

Pre-set heights save time and eliminate the need to reset the height for apparatus 1, 2, 5, 6, and intrinsic dissolution tests.

- **Electronic Qualification Guidance**

Electronic qualification reminders eliminate oversights to ensure maximum uptime and instrument availability.

Dissolution Test System



Innovation Orchestrated by You

The symphony 7100 Bathless Dissolution System is the most advanced dissolution design to date, bringing to market features never before available in a dissolution unit.

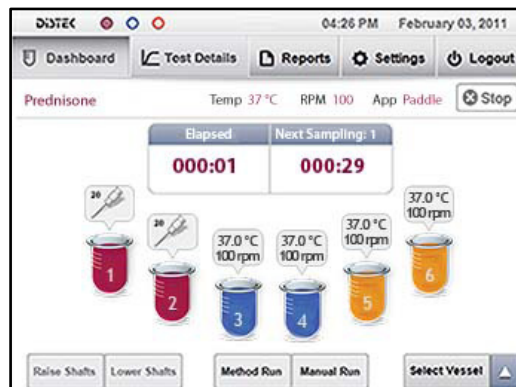
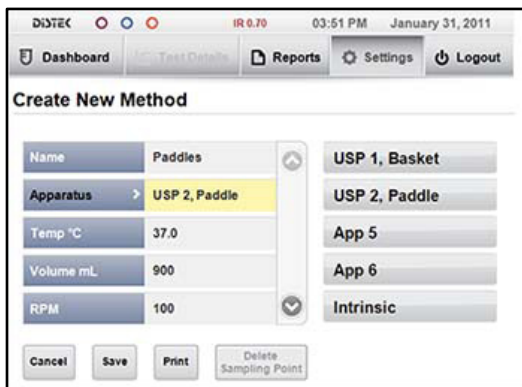
Building upon Distek's first to market bathless technology, this third generation unit offers the fastest media heating time in the industry which increases laboratory throughput. The proven bathless technology eradicates bath based maintenance costs and supplements your laboratory's green efforts by saving water and power.

For the first time in dissolution the symphony 7100 empowers the user to conduct up to three unique methods simultaneously. Distek further separates from the competition by introducing modularity and patent pending D-Drive technology to the dissolution unit. Modularity allows the customer to specify the number of positions (1-8) desired, allowing the flexibility for users to scale up the dissolution unit to meet their needs. D-Drive technology grants the symphony 7100 the ability to independently raise and lower each shaft as well as control the stirring speed in each position.

The symphony 7100's touch screen user interface was meticulously designed to provide the user with an intuitive and interactive tool to command the robust feature set including: storing 100 reports and methods, running three unique methods simultaneously, managing 25 users with three access levels, monitoring in-shaft temperatures, custom position numbering, setting qualification reminders, and much more.

symphony 7100 Specifications

Dissolution Vessels	Up to Eight 1L Vessels
Volume	500 - 1000 mL Programmable
Vessel Heating Rate	2°C per Minute
RPM Control Range	30 - 300 RPM, Digitally Controlled
Resolution	0.1 RPM
Accuracy	±1 RPM up to 100 RPM and ±1% >100 RPM
Motor	Brushless DC
Vessel Temperature Control	20 - 99°C, Independently Controlled High Watt Heater Jackets
Display Resolution	0.01°C
Accuracy	±0.25°C (Test Setting: Paddles, 900 mL, 50 RPM)
Shaft Wobble	Less than 0.010" / 0.254 mm (Total Indicator Runout)
Lab Temperature Min/Max	20°C /25°C
Lab Humidity Min/Max	Above 30% Relative Humidity / Below the Dew Point
Display	5.7" Color Touch Screen
Program Modes	Manual (Individual Vessel Control) Automatic (Up to 100 Pre-Programmed Methods) Distek EVO 4300, Opt-Diss 405™, Agilent 8453 UV/Vis or Waters® Alliance® 2695D HPLC
Interface Ports	USB, Ethernet, RS-232, RS-485
Construction Materials	Cast Aluminum, Stainless Steel, Acid Resistant Solid State Heating Elements, Engineered Plastic
Dimensions	27" (w) x 39" (h) x 22" (d) / (69 cm x 99 cm x 56 cm)
Weight	78 lbs. / (35 kg)
Electrical Power	115V ± 15V 50/60 Hz 15A or 230V ± 15V 50/60 Hz 8A (Operating Voltage Pre-Set at Factory)



888.2.DISTEK
888.234.7835

info@distekinc.com
www.distekinc.com

121 North Center Drive • North Brunswick, NJ 08902

