



# UV-2100 DOUBLE BEAM UV/VIS SPECTROPHOTOMETER

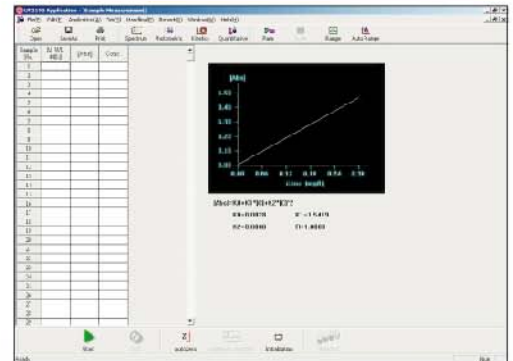
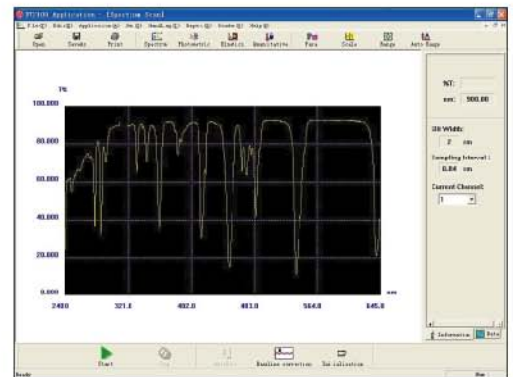
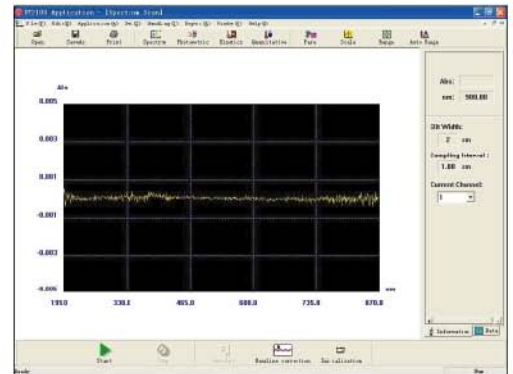
## FEATURES:

- Double beam, fully automated scanning system
- Compatible PC controlled, rich analytical software.
- Wavelength Scan:  
Scanning sample spectra in any range within 190-900nm.  
Three scanning speed: Fast, Middle and Slow selectable, with Min. sampling interval of 0.04nm.  
Data processing function of derivative spectra and smoothing, peak picking, spectrum expansion and superposition and other arithmetic calculation.
- Fixed wavelength measurement:  
10 wavelengths can be set at the same time.  
Arithmetic calculation between wavelengths can be done.
- Quantitation:  
Standard factor method, standard contrast method; 2-wavelength method, and 3-wavelength method etc.
- Kinetic measurement:  
Wavelengths and sampling interval selectable, activity calculation available.

# UV-2100 DOUBLE BEAM UV/VIS SPECTROPHOTOMETER

## SPECIFICATIONS:

- Wavelength Range: 190-900nm
- Spectral Bandwidth: 0.1, 0.2, 0.5, 1.0, 2.0nm
- Wavelength Accuracy:  $\pm 0.3\text{nm}$  (0.15nm if required)
- Wavelength Reproducibility: 0.15nm
- Photometric Accuracy:  $\pm 0.3\%T$  (0-100%T),  $\pm 0.002A$ (0-0.5A),  $\pm 0.004A$ (0.5-1A)
- Photometric Reproducibility: 0.15%T
- Working Mode: T, A (-3~4A), C, E
- Stray Light:  $\leq 0.05\%T$ (NaI, at 220nm)
- Baseline Flatness:  $\pm 0.001A$
- Stability: 0.0004A/h (at 500nm, after warming up)
- Detector: photomultiplier
- Light source: tungsten halogen lamp and deuterium lamp
- Power: AC: 230V/50Hz, 110V/60Hz, 400W
- Dimensions: 670x470x210mm
- Weight: 45kg



Beijing Rayleigh Analytical Instrument Corp  
 Bldg.A5,NO.9,jiuxianqiao East Rd.,  
 Chaoyang District,Beijing 100016,China

Tel: 8610 84347288/89, 64361325  
 Fax: 64377039  
 Email: market@braic.com  
 http://www.braic.com